

TUNGSTEN CARBIDE HAND TOOLS



■ EUROP stone-cutting chisel (UNIVERS group) Hardness: * (yellow) Very tough carbide

Section (mm)	Total length (mm)	Width (mm)	gr.	Code	Stock
○10	175	4	90	1833	●
○10	175	6	100	5002	●
○10	175	8	100	7936	●
○10	175	10	100	8134	●
○10	175	12	105	8710	●
○12	175	15	110	3769	●
○12	175	18	115	3525	●
○12	175	20	120	5695	●



Cutting on limestone. Rough cutting on granite. Recommended for amateurs. Can be transformed into a pneumatic tool by adding an impact head (page 1.04).

■ EUROP stone-cutting chisel (UNIVERS group) Hardness: * (orange) Hard and tough carbide

Section (mm)	Total length (mm)	Width (mm)	gr.	Code	Stock
○10	175	4	90	3400	●
○10	175	5	95	5317	●
○10	175	6	100	2806	●
○10	175	7	100	1843	●
○10	175	8	100	8692	●
○10	175	10	100	5497	●
○10	175	12	105	4354	●
○12	175	15	110	1015	●
○12	175	18	115	3013	●
○12	175	20	120	5263	●



All cutting work on all materials. Excellent cutting properties. Can be transformed into pneumatic tool by adding an impact head (page 1.04).

■ EUROP stone-cutting chisel (UNIVERS group) Hardness: * (Blue) Very hard carbide

Section (mm)	Total length (mm)	Width (mm)	gr.	Code	Stock
○10	175	4	90	7837	●
○10	175	6	100	4768	●
○10	175	8	100	3643	●
○10	175	10	100	1393	●
○10	175	12	105	7081	●
○12	175	15	110	2536	●
○12	175	18	115	8386	●
○12	175	20	120	8440	●



Caution, Fragile! To be used exclusively for fine hand work and work on sandstone; maintains very incisive cutting.

■ Lot of 8 carbide tools, comprised of 7 EUROP chisels 4, 6, 8, 10, 12, 15, 20 + One scribing iron

Carbide hardness	gr.	Code	Stock
*	855	8574	●
*	855	7342	●
*	855	9699	●

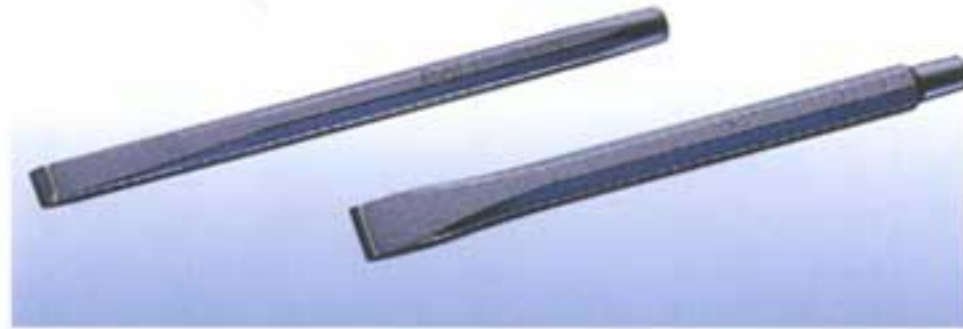


New

TUNGSTEN CARBIDE HAND TOOLS

■ FORT stone-cutting chisel (UNIVERS group) Hardness: * (yellow) Very tough carbide

Section (mm)	Total length (mm)	Width (mm)	gr.	Code	Stock
○10	175	4	90	3237	●
○10	175	6	100	3397	●
○10	175	8	100	3717	●
○10	175	10	100	2482	●
○10	175	12	105	7112	●
○12	175	15	110	4087	●
○12	175	20	120	3777	●



Can be transformed into pneumatic tool by adding an impact head (page 1.04)

■ FORT stone-cutting chisel (UNIVERS group) Hardness: * (orange) hard and tough carbide

Section (mm)	Total length (mm)	Width (mm)	gr.	Code	Stock
○10	175	4	90	1866	●
○10	175	6	100	6825	●
○10	175	8	100	3252	●
○10	175	10	100	1065	●
○10	175	12	105	5066	●
○12	175	15	110	5772	●
○12	175	20	120	9381	●



Can be transformed into pneumatic tool by adding an impact head (page 1.04)

■ Lot of 8 carbide tools, comprised of 7 FORT chisels 4, 6, 8, 10, 12, 15, 20 + One scribing iron

Carbide hardness	gr.	Code	Stock
*	855	1987	●
*	855	2877	●



■ Mallet head carbide chisel

Section (mm)	Total length (mm)	Width (mm)	gr.	Code	Stock
∅ 20	170	20	330	6492	○
∅ 20	170	25	350	4638	●
∅ 20	170	30	400	7887	●
∅ 20	170	35	450	7761	○
∅ 20	170	40	550	6258	●
∅ 20	170	50	560	9039	●
∅ 20	170	55	580	3180	●
∅ 20	170	60	600	5925	○
∅ 20	170	65	620	2073	○
∅ 20	170	80	660	2226	●
∅ 20	170	85	700	9957	○



TUNGSTEN CARBIDE HAND TOOLS



■ Carbide scribing iron

Section (mm)	Total length (mm)	gr.	Code	Stock
∅7	180	55	5327	●



■ Diamond scribing iron

Section(mm)	Total length (mm)	gr.	Code	Stock
∅8	130	20	5452	●



■ Carbide tip compass

Total length(mm)	gr.	Code	Stock
150	115	8292	●
200	140	2523	●
300	200	8888	●



■ Tile-layer's chisel

Width (mm)	Section (mm)	Total length (mm)	gr.	Code	Stock
8	∇ 8	90	35	6987	●



■ Carbide stonecutter's punch

Section (mm)	Total length (mm)	Form	gr.	Code	Stock
∅10	175	spitzig	100	3962	●

UNIVERS group tool, can be transformed into pneumatic tool by adding an impact head (see page 1.04)



■ Carbide bush-hammer chisel

Section (mm)	Head (mm)	Teeth	gr.	Code	Stock
∅10	10 x 10	4 x 4	120	1187	●
∅10	5 x 10	2 x 4	115	6337	●

UNIVERS group tool, can be transformed into pneumatic tool by adding an impact head (see page 1.04)



■ Flat tooth carbide claw

Teeth	Width (mm)	Section (mm)	Total length	gr.	Code	Stock
2	10	∅14	190	220	8577	●
3	14	∅14	190	220	6787	●
4	18	∅14	190	220	7732	●



■ Pointed tooth carbide claw

Teeth	Width (mm)	Section (mm)	Total length	gr.	Code	Stock
3	14	∅14	190	225	8819	●
4	18	∅14	190	235	2294	●



TUNGSTEN CARBIDE HAND TOOLS



■ Carbide scribing iron

Section (mm)	Total length (mm)	gr.	Code	Stock
∅7	180	55	5327	●



■ Diamond scribing iron

Section(mm)	Total length (mm)	gr.	Code	Stock
∅8	130	20	5452	●



■ Carbide tip compass

Total length(mm)	gr.	Code	Stock
150	115	8292	●
200	140	2523	●
300	200	8888	●



■ Tile-layer's chisel

Width (mm)	Section (mm)	Total length (mm)	gr.	Code	Stock
8	∇ 8	90	35	6987	●



■ Carbide stonecutter's punch

Section (mm)	Total length (mm)	Form	gr.	Code	Stock
∅10	175	spitzig	100	3962	●

UNIVERS group tool, can be transformed into pneumatic tool by adding an impact head (see page 1.04)



■ Carbide bush-hammer chisel

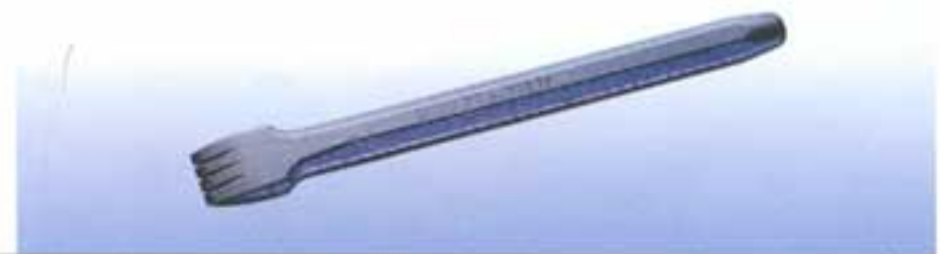
Section (mm)	Head (mm)	Teeth	gr.	Code	Stock
∅10	10 x 10	4 x 4	120	1187	●
∅10	5 x 10	2 x 4	115	6337	●

UNIVERS group tool, can be transformed into pneumatic tool by adding an impact head (see page 1.04)



■ Flat tooth carbide claw

Teeth	Width (mm)	Section (mm)	Total length	gr.	Code	Stock
2	10	∅14	190	220	8577	●
3	14	∅14	190	220	6787	●
4	18	∅14	190	220	7732	●



■ Pointed tooth carbide claw

Teeth	Width (mm)	Section (mm)	Total length	gr.	Code	Stock
3	14	∅14	190	225	8819	●
4	18	∅14	190	235	2294	●



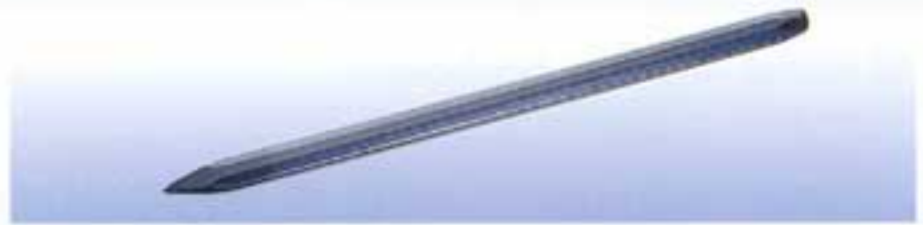
ALL STEEL HAND TOOLS



Pin

Heat treated steel tool (special for stone-carver).
For concrete, limestone, etc.

Section (mm)	Total length (mm)	gr.	Code	Stock
○12	250	230	1462	●
○14	300	360	3398	●
○16	350	540	5013	●



Minimum delivery of 5 items per size.

Chisel

Heat treated steel tool (special for stone-carver).
For concrete, limestone, etc.

Width (mm)	Section (mm)	Total length (mm)	gr.	Code	Stock
15	○12	190	170	1579	●
18	○14	190	220	4598	●
25	○16	190	280	4555	●
25	○16	300	480	4282	●



Minimum delivery of 5 items per size.

Small chisel

Heat treated steel tool for limestone, imitations, etc.

Width (mm)	Section (mm)	Total length (mm)	gr.	Code	Stock
4	○8	180	75	8476	●
6	○8	180	75	9931	●
8	○8	180	75	3368	●
10	○8	180	75	9944	●
12	○10	180	110	5359	●
15	○10	180	120	2569	●
18	○10	180	120	5098	●



Minimum delivery of 5 items per size.

Lot of 12 small chisels

Comprised of 1 item in 4 and 18 width
2 items in 6, 8, 10, 12 and 15 width

gr.	Code	Stock
1100	5489	●



Heat treated steel claw

Teeth	Width (mm)	Section (mm)	Total length	gr.	Code	Stock
4	15	○10	180	120	7938	●
4	18	○12	180	170	4019	●
6	18	○14	180	205	9262	●
4	25	○16	180	280	4994	●



Heat treated steel pitcher

Width (mm)	Section (mm)	Total length (mm)	gr.	Code	Stock
35 x 8	○18	200	440	6749	○
40 x 8	○20	200	550	5789	●
50 x 8	○20	200	560	5119	●



Lot of 12 punches, for 'rough working' granite using high-quality steel (forging and quenching)

Section (mm)	Total length (mm)	gr.	Code	Stock
○18	250	7 400	8942	●
○20	250	9 140	4552	○
○20	300	11 130	1407	○





ALL STEEL HAND TOOLS

BUSH-HAMMERS SECTION 20 - 35 - 40

Modern and efficient heat treatment equipment, combined with a partnership with French steelworks, have enabled GUILLET S.A. to develop unique quality, suitable for work with all materials: CONCRETE, LIMESTONE, MARBLE, GRANITE.

■ Hand bushing bit holder

for work as a stonecutter's chisel with inserts, section 20

Section (mm)	Total length (mm)	Cone	gr.	Code	Stock
14	180	MG	210	1479	●



The mounting is delivered without bushing bits.

■ Hand bushing bit holder Section 20

with inserts, section 20

Section (mm)	Taper	gr.	Code	Stock
20	MG	390	6399	●



The hammer is delivered without bushing bits - Wood handle, see page 1.09.

■ Hand bushing bit holder Section 35 - 40

with heading keys

Section (mm)	Head number	Ø of tenon (mm)	gr.	Code	Stock
35	1	20	1 000	4936	○
35	2	20	1 130	2729	●
40	2	20	1 560	4689	●



The hammer is delivered without inserts - Wood handle, see page 1.09.

■ Bush-hammer Section 40 - With handle

25 / 49 teeth - for Concrete, Limestone, Marble, Granite

Section (mm)	gr.	Code	Stock
40	1960	9398	●

The hammer is delivered with a handle and 2 bushing bits of 25 and 49 teeth.



■ CLMG Steel bushing bit Section 20 - 35 - 40

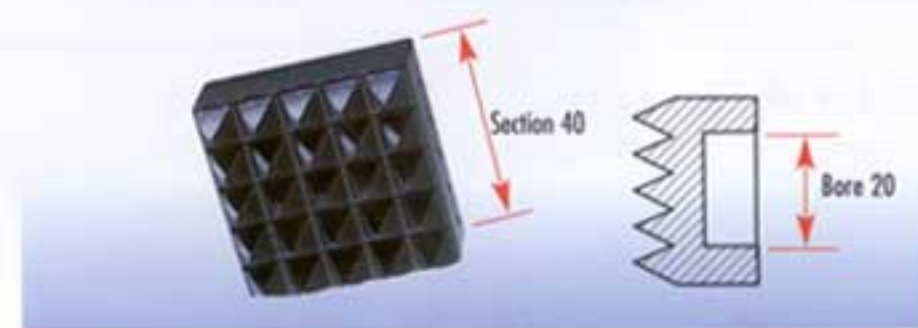
For Concrete, Limestone, Marble, Granite
MG taper

Section (mm)	Fix. (mm)	Teeth	gr.	Code	Stock
20	MG taper	9	50	4392	●
20	MG taper	16	50	7398	●
20	MG taper	25	55	1938	●
20	MG taper	36	55	2024	●

Bore 20 mm

Section (mm)	Fix. (mm)	Teeth	gr.	Code	Stock
35	∅ 20	16	110	2164	●
35	∅ 20	25	110	1254	●
35	∅ 20	36	110	2109	●
35	∅ 20	49	110	5869	●
35	∅ 20	64	120	8749	●
35	∅ 20	81	120	5979	●

Section (mm)	Fix. (mm)	Teeth	gr.	Code	Stock
40	∅ 20	16	180	9302	●
40	∅ 20	25	160	1357	●
40	∅ 20	36	150	1437	●
40	∅ 20	49	150	2787	●
40	∅ 20	64	150	5202	●
40	∅ 20	81	140	2667	●
40	∅ 20	100	140	2117	●





BUSH-HAMMERS SECTION 45

Modern and efficient heat treatment equipment, combined with a partnership with French steelworks, have enabled GUILLET S.A. to develop unique quality, suitable for work with all materials: CONCRETE, LIMESTONE, MARBLE, GRANITE.

Hand bushing bit holder Section 45 with heading keys

Section (mm)	Hood number	Ø of tenon (mm)	gr.	Code	Stock
45	1	20	2 000	7883	○
45	2	20	2 150	9264	●
45	2	25	2 150	9734	○



The hammer is delivered without inserts - Wood handle, see page 1.09.

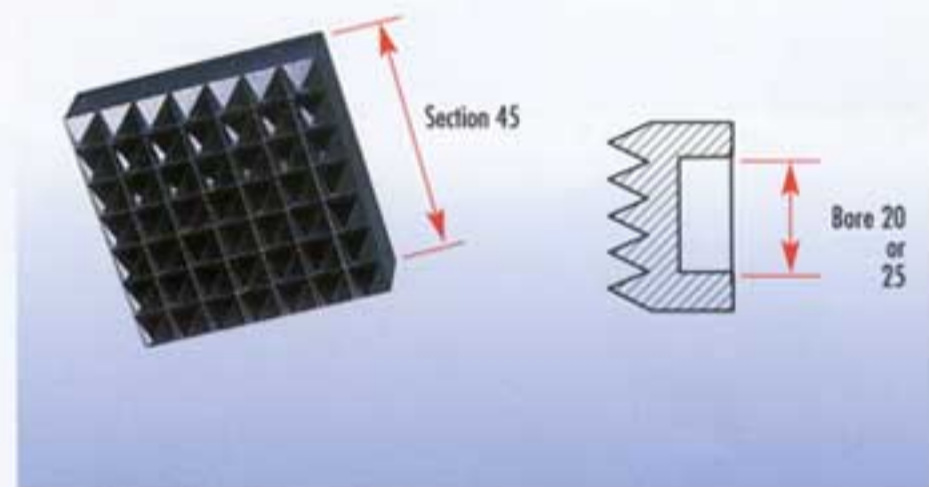
Spare key "Large" for Insert-holder hammer

Section (mm)	gr.	Code	Stock
35-40	40	5054	●
45	50	5994	●



CLMG Steel bushing bit Section 45 for Concrete, Limestone, Marble, Granite

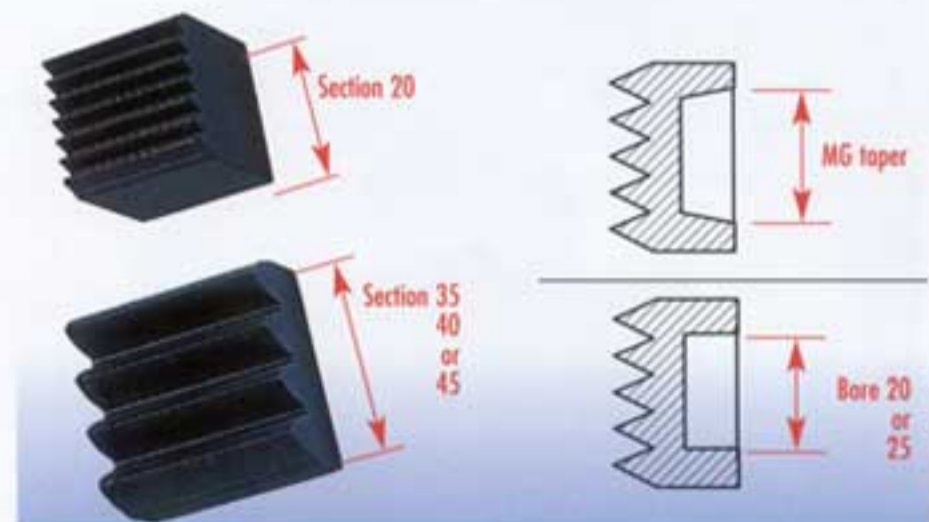
Section (mm)	Bore (mm)	Teeth	gr.	Code	Stock
45	Ø 20	16	230	6917	●
45	Ø 20	25	220	9257	●
45	Ø 20	36	205	1712	●
45	Ø 20	49	200	6098	●
45	Ø 20	64	200	4023	●
45	Ø 20	81	205	5763	●
45	Ø 20	100	210	5508	●
45	Ø 25	16	220	2158	○
45	Ø 25	25	210	5653	○
45	Ø 25	36	195	4478	○
45	Ø 25	49*	190	1543	○
45	Ø 25	64*	210	1708	○
45	Ø 25	81	190	6228	○
45	Ø 25	100	205	5678	○
45	Ø 25	144	210	3293	○



* Special for mechanical stone roughing units.

CLMG Steel bushing bit for Concrete, Limestone, Marble, Granite

Section (mm)	Fix.	Strip number	gr.	Code	Stock
20	MG taper	6	55	4554	○
35	Ø 20	4	110	1221	○
35	Ø 20	5	110	8541	○
40	Ø 20	6	190	1107	○
45	Ø 20	5	220	1585	○
45	Ø 20	7	210	8843	○
45	Ø 25	6	200	5713	○



Solid bush-hammer Section 40 25/49 teeth - for Concrete, Limestone, Marble, Granite

Section (mm)	gr.	Code	Stock
40	1850	5369	●





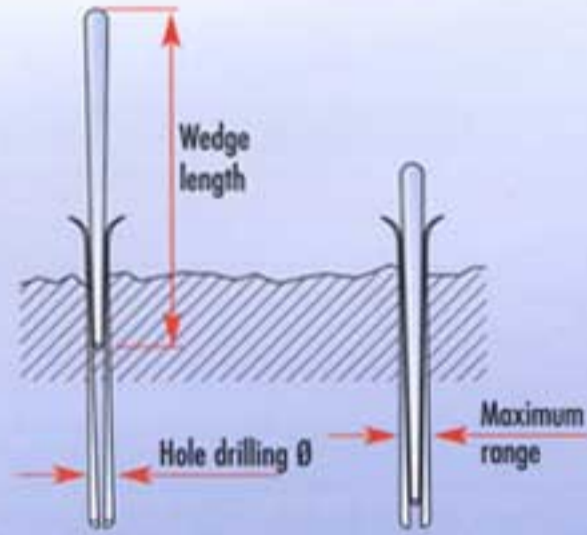
ALL STEEL HAND TOOLS

SPLITTING WEDGES

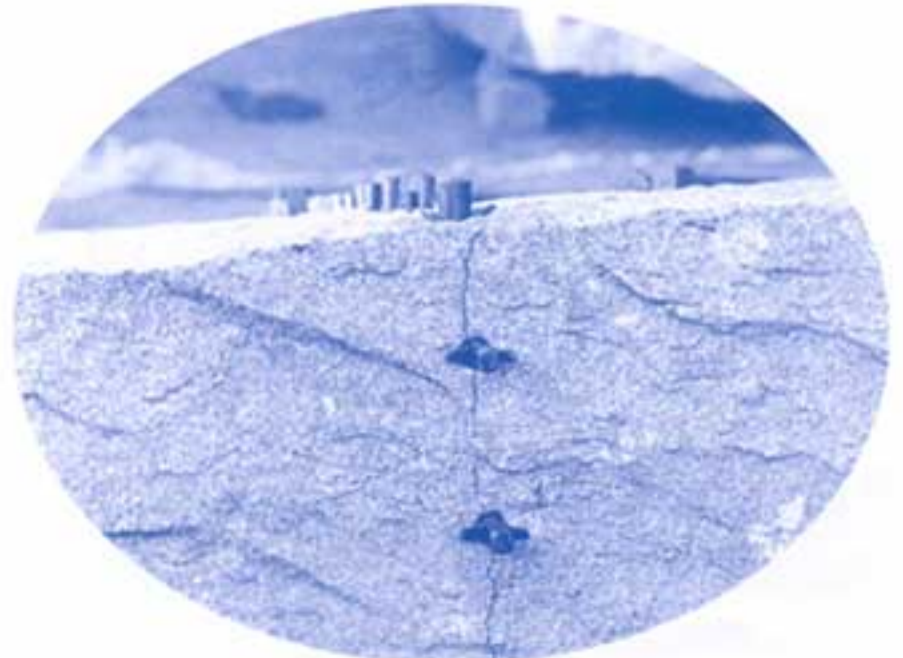
3-part splitting wedge (set of 1 wedge + 2 shims)

Hole Ø (mm)	Wedge length (mm)	Wedge Ø (mm)	Max. range (mm)	gr.	Code	Stock
Ø 22	115	Ø 18	25	280	4062	●
Ø 25	300	Ø 24	34	1 350	6862	●
Ø 30	300	Ø 28	38	1 700	5577	●
Ø 30	400	Ø 28	38	2 360	6752	●
Ø 30	500	Ø 28	38	2 860	8127	○
Ø 30	600	Ø 28	38	3 500	8952	●
Ø 30	800	Ø 28	38	4 500	6547	●
Hole Ø (mm)	Wedge length (mm)	Wedge Ø (mm)	Max. range (mm)	gr.	Code	Stock
Ø 35	300	Ø 30	40	2 000	1122	●
Ø 35	400	Ø 30	40	2 580	8262	●
Ø 35	500	Ø 30	40	3 200	2752	●
Ø 35	600	Ø 30	40	3 900	9272	●
Ø 35	800	Ø 30	40	5 150	2557	●
Hole Ø (mm)	Wedge length (mm)	Wedge Ø (mm)	Max. range (mm)	gr.	Code	Stock
Ø 40	300	Ø 35	48	2 700	8417	●
Ø 40	400	Ø 35	48	3 560	5347	●
Ø 40	500	Ø 35	48	4 480	1202	●
Ø 40	600	Ø 35	48	5 350	9537	●
Ø 40	800	Ø 35	48	6 950	8667	●
Ø 45	500	Ø 40	54	5 500	2430	●

DEFINITION: HOLE DRILLING Ø X WEDGE LENGTH
DELIVERY IN COMPLETE SETS



Cutting of granite head with 22 x 115 wedges





■ Stone-carver's hand-hammer with handle

Section (mm)	Total length	gr.	Code	Stock
35 x 35	95	750	9783	●
35 x 35	70	500	4752	●
40 x 40	75	750	9531	●



■ Stone-cutter's hand-hammer with handle

Section (mm)	Total length (mm)	gr.	Code	Stock
40 x 40	90	1 000	6930	●
40 x 40	110	1 250	3537	●
40 x 40	130	1 450	1755	●



■ Stonemason's hand-hammer with handle

Section (mm)	Total length (mm)	gr.	Code	Stock
45 X 45	75	1 000	4716	●
45 X 45	90	1 250	5616	●
45 X 45	105	1 450	6678	●



■ Round Portuguese hand-hammer with handle

Section (mm)	Total length (mm)	gr.	Code	Stock
∅ 52	55	600	1851	●
∅ 63	60	1 000	1092	●
∅ 65	65	1 250	5440	●
∅ 70	70	1 450	9047	●



■ Pitcher with handle

Section (mm)	Total length	gr.	Code	Stock
60	230	5 000	7894	●



■ Stone wedge

Section (mm)	gr.	Code	Stock
45 x 35	1 200	5969	●
∅ 25 x 105	300	5244	●



■ Wood handle

Destination	Total length (mm)	gr.	Code	Stock
Stone-carver's hand-hammer	250	100	8113	●
Stonecutter's hand-hammer	270	150	1528	●
Stonemason's hand-hammer	350	160	5558	●
Stonemason's hand-hammer	230	90	4696	●
Bush-hammer 20	270	160	5239	●
Paviour's hammer 1 carbide	270	160	5239	●
Bush-hammer 35/40/45	400	220	8088	●
Solid bush-hammer	400	220	8088	●
Paviour's hammer 2 carbides	350	180	2753	●

